

2-4-C LITE

THE ENERGY MARKET SIMULATOR

GENERATION

-Technical Parameters

- Ramp Rates
- Seasonal thermal limits
- Marginal Loss Factors

-Market Bidding

- SRMC, LPMC
- CPRS adjustments
- Customized

-Availability

- Monte Carlo forced outage
- Maintenance Schedules

TRANSMISSION

-Full set of ANTS Constraints

-Inter-Regional Loss Factors

-Dynamic Limits

DEMAND

-Full regional time-sequential

load traces

-Demand Side Participation

OPERATION

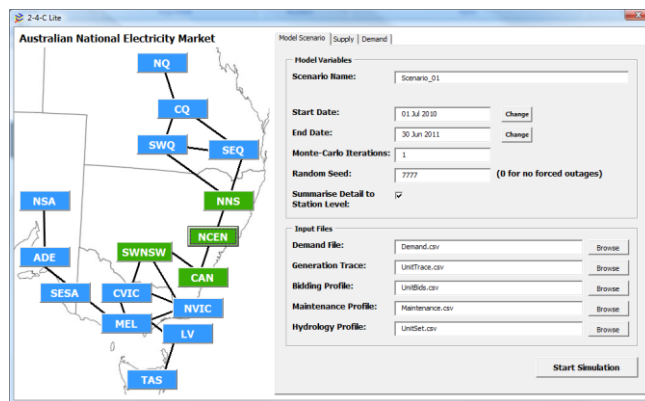
-Energy NEM Rules enforced

-Dispatched time-sequentially on

30 minute (trading) intervals

-Full result set per dispatch

- Generation Availability
- Generation Output
- Spot Prices
- Interconnector Flow / Limits
- ANTS Constraint Data



- Quick and simple to setup and run
- Get all the details you want down to the individual dispatches
- Utilises Microsoft Excel's familiarity and commonality
- Uses ROAM Consulting's flagship 2-4-C Engine for highly accurate simulations of the physical and financial operation of the Australian National Electricity Market

Since soon after the start of the Australian National Electricity Market (NEM) in 1998, ROAM Consulting has been providing forecasts to a large number of market participants including retailers, generators and transmission operators, and the market operator, NEMMCO.

This forecasting is made possible by ROAM Consulting's own 2-4-C ("To Foresee") Simulation software. The software, written entirely in-house, has been constantly updated to keep up with the ongoing addendums and modifications to the NEM rules.

Using the same dispatch engine used in ROAM's market leading NEM forecasts, 2-4-C Lite provides a comprehensive and accurate market simulation with almost all the features of ROAM's 2-4-C package.

The package uses Microsoft Excel to interact with the input data, providing a familiar and easy to use interface to a comprehensive data set.

The 2-4-C Lite package also includes detailed results analysis tools, which can quickly generate graphics and figures including:

- Pool prices;
- Generation dispatch;
- Inter-regional transmission flows;
- Inter- and Intra-regional transmission constraints;

Finally, results can be viewed in almost any degree of granularity, including average time of day, time of month, annual, seasonal and half-hourly.

TECHNICAL SUPPORT

A full year of technical support is provided with the purchase of 2-4-C Lite.

LICENSE OPTIONS

Single and multi-user 'site' license options are available.

ALSO INCLUDED

To get you up and simulating quicker, 2-4-C Lite comes pre-loaded with the latest data sets.

Also included are easy-to-use Results Analysis Tools to analyse your results quickly.

For more information on any of our products or services please visit us on the Web at:
www.roamconsulting.com.au
or contact us via email at
sales@roamconsulting.com.au

ROAM Consulting
Level 4, 49 Sherwood Rd
Toowong, QLD, 4066
Phone: (07) 3371 2644
Fax: (07) 3371 0880

2-4-C Lite Features and Benefits



2-4-C Lite provides the user with complete assurance in the validity and realism of every dispatch.

The 2-4-C dispatch engine has been written to mimic NEMMCO's own real-time dispatch engine NEMDE. In the past several years ROAM has completed work for NEMMCO to 'shadow' certain key studies, which has proven the accuracy of the 2-4-C dispatch engine.

The design of 2-4-C Lite has been kept simple allowing the user to have as much, or as little, input into the simulations as deemed necessary.

2-4-C Lite also has batch capability to do multiple combinations of years and Monte Carlo iterations, while the interface will provide the user with the simulation progress while the simulations are running.

Purchasing Information

To find out more information on 2-4-C Lite or to place an order for the 2-4-C Lite simulation package (including the latest data set, results analysis tools, and 12months of product support), please visit us:

- on the Web at: <http://www.roamconsulting.com.au/24CLite>
- or email us at: sales@roamconsulting.com.au

System Requirements

- Microsoft Excel 2003 to 2007
- Minimum 120 MB Hard Disk Drive space
- Minimum 128 MB RAM
- General knowledge of NEM operation
- Internet connection with access to HTTP sites

OTHER SERVICES AVAILABLE

- MLF Forecasting
- Constraint Analysis
- Integrated Resource Planning
- CPRS Impact forecasting
- Experience in other Electricity Markets

**ROAM
CONSULTING**
ENERGY MODELLING EXPERTISE